



MarinerEastNews

JUNE 2017

Mariner East

Mariner East 2 (ME2), which includes the construction of a 350-mile pipeline system from eastern Ohio to southeast Pennsylvania, will safely and efficiently transport natural gas liquids (propane, ethane and butane) from the Marcellus and Utica shale basins across Pennsylvania.

As an economic driver and regional job generator, the multibillion-dollar Mariner East 2 project will provide opportunities for local energy access throughout the system and establish a new market for petrochemical manufacturing opportunities in Pennsylvania.

The Mariner East 2 project follows the successful Mariner East 1 (ME1) project, which has been moving liquefied propane from southwest Pennsylvania to southeast Pennsylvania since December 2014 and shipping liquefied ethane since early 2016.

Sunoco Pipeline is committed to maintaining frequent communication with all stakeholders throughout all stages of the project.

The Mariner East 2 Construction Newsletter will serve as one of many methods we will deploy to ensure that local officials and the community are aware of construction progress and updates. ●

Four Years of Pipeline Progress

2014

Fourth Quarter 2014

- ME2 successful open season announced
- ME2 surveying and notifications
- ME2 landowner discussions and open houses begin
- ME1 first propane shipments begin

2015

- ME2 Landowner open houses continue
- ME2 easement acquisition continues
- ME2 landowner open houses conclude (25 total from Ohio to southeast PA)
- ME2 local municipal meetings held
- ME2 tree-felling activities begin in Ohio and western PA
- ME2 easement acquisition continues
- ME2 state and local permit acquisition continues

2016

- ME1 fully operational, shipping propane and ethane
- ME2 local municipal meetings continue
- ME2 tree felling completed in identified areas
- ME2 easement acquisition near completion
- ME2 state and local permit acquisition continues
- ME2 Pre-construction activities commence

2017

First Half 2017

- ME2 receipt of necessary PA DEP permits
- ME2 Full-scale construction begins

Did You Know?

Pennsylvania-headquartered Dura-Bond is one of the domestic manufacturers applying the protective coating

to the approximately 75,000 tons of steel pipe that will be used for the Mariner East 2 project.



Dura-Bond

Contact Sunoco Pipeline

Mariner East 2 Project

525 Fritztown Road
Sinking Spring, PA 19608

855-430-4491

www.marinerpipelinefacts.com

Twitter - @SunocoPipeline

The Sunoco Pipeline Public and Community Affairs team is dedicated to providing project information and construction updates to residents and local officials in the communities where we live and operate our Mariner East system. This regular publication will provide project updates; interested recipients can sign up at www.marinerpipelinefacts.com.



Mariner East 2 – Ohio and West Virginia

HARRISON COUNTY, OH • JEFFERSON COUNTY, OH • BROOKE COUNTY, WV

Sunoco Pipeline has segmented the construction of the 350-mile pipeline into seven sections from Ohio to southeast Pennsylvania. In keeping with our commitment to strong communication with local leaders and the community, each construction “spread” has an individual point of contact for community affairs. There is one segment for Ohio and West Virginia.

Segment 1 includes Harrison and Jefferson counties in Ohio, and Brooke County, West Virginia. Sunoco Pipeline will continue to provide regular project updates including important news, mapping, community partnership announcements and other pertinent information

Activities of note

- It's safe to say we are in the home stretch for heavy construction in Ohio and West Virginia. As it stands today clearing and grading are complete, and ditching, stringing and bending are all above the 90 percent mark.
- In some sections we have begun clean-up, and will soon be testing the lines for safety. We will begin hydro-testing in the portion of line from the Ohio

River to Scio beginning next month. Hydro-testing involves filling the pipeline with water at pressures higher than maximum operating pressures to verify the strength of the pipe. This will continue into July. For the portion of line in Brooke County through Washington County, Pennsylvania, the hydro-testing will start in late June and will conclude in late July. During this time frame the project team will also deploy “smart pigs,” which will record information of the internal conditions of the line. We are taking every step possible to meet and exceed all state and federal safety standards in the process.

- As the schedule dictates, our team will also begin restoration efforts later in the summer. This will include the application of seasonally appropriate seeds.

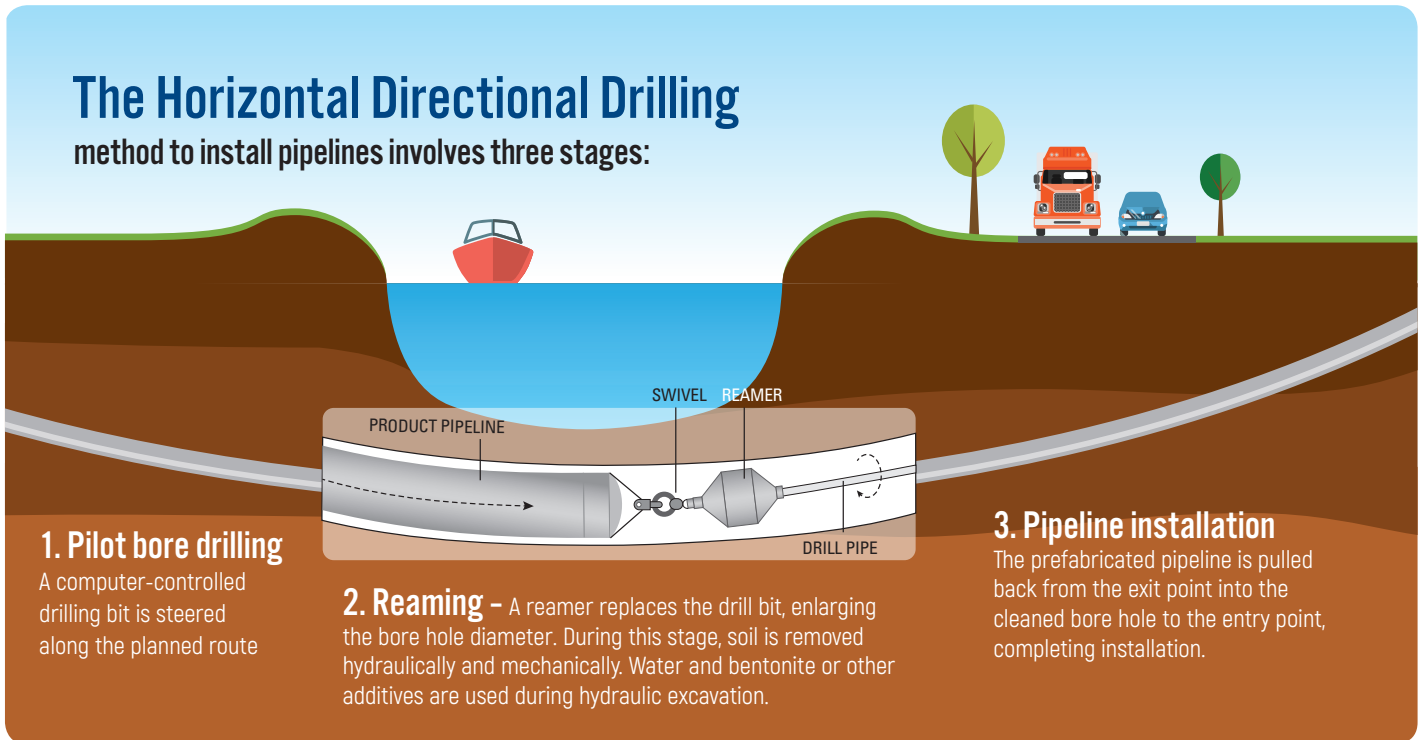
- We are deeply committed to our core values of safety, security and environmental stewardship, and these values will guide everything we do during construction of Mariner East 2.
- Our team will continue to provide regular updates to local stakeholders in addition to this construction newsletter. ●

Did You Know?

The Mariner East 2 project will use approximately 75,000 tons of steel, manufactured by American steel mills. That's more than four times the steel used for Heinz Field and 30,000 more tons of steel than the 1,776-foot tall One World Trade Center in New York City.

The Horizontal Directional Drilling

method to install pipelines involves three stages:



1. Pilot bore drilling

A computer-controlled drilling bit is steered along the planned route

2. Reaming – A reamer replaces the drill bit, enlarging the bore hole diameter. During this stage, soil is removed hydraulically and mechanically. Water and bentonite or other additives are used during hydraulic excavation.

3. Pipeline installation

The prefabricated pipeline is pulled back from the exit point into the cleaned bore hole to the entry point, completing installation.

FOR MORE INFORMATION CONTACT: MATT CROCCO • matthew.crocco@energytransfer.com
855-430-4491 • www.marinerpipelinefacts.com • @SunocoPipeline



SUNOCO PIPELINE
An ENERGY TRANSFER Company



Mariner East 2 – Washington, Allegheny and Westmoreland Counties

Sunoco Pipeline has segmented the construction of the 350-mile pipeline into seven sections from Ohio to southeast Pennsylvania. In keeping with our commitment to strong communication with local leaders and the community, each construction “spread” has an individual point of contact for community affairs.

Segment 1 encompasses communities located in Washington, Allegheny and Westmoreland counties. Sunoco Pipeline will continue to provide regular project updates including important news, mapping, community partnership announcements and other pertinent information.

Activities of note

- Over the last several months, contractors have concluded such pre-construction activity as surveying and staking the right-of-way, access roads and temporary workspaces.
- Following the receipt of all necessary state and local permits, construction of the 20” pipeline has commenced in earnest. Construction of the pipeline will be completed using two methods -- conventional construction and horizontal directional drill (HDD). We will also be building a 16” pipeline starting at our Delmont Terminal in

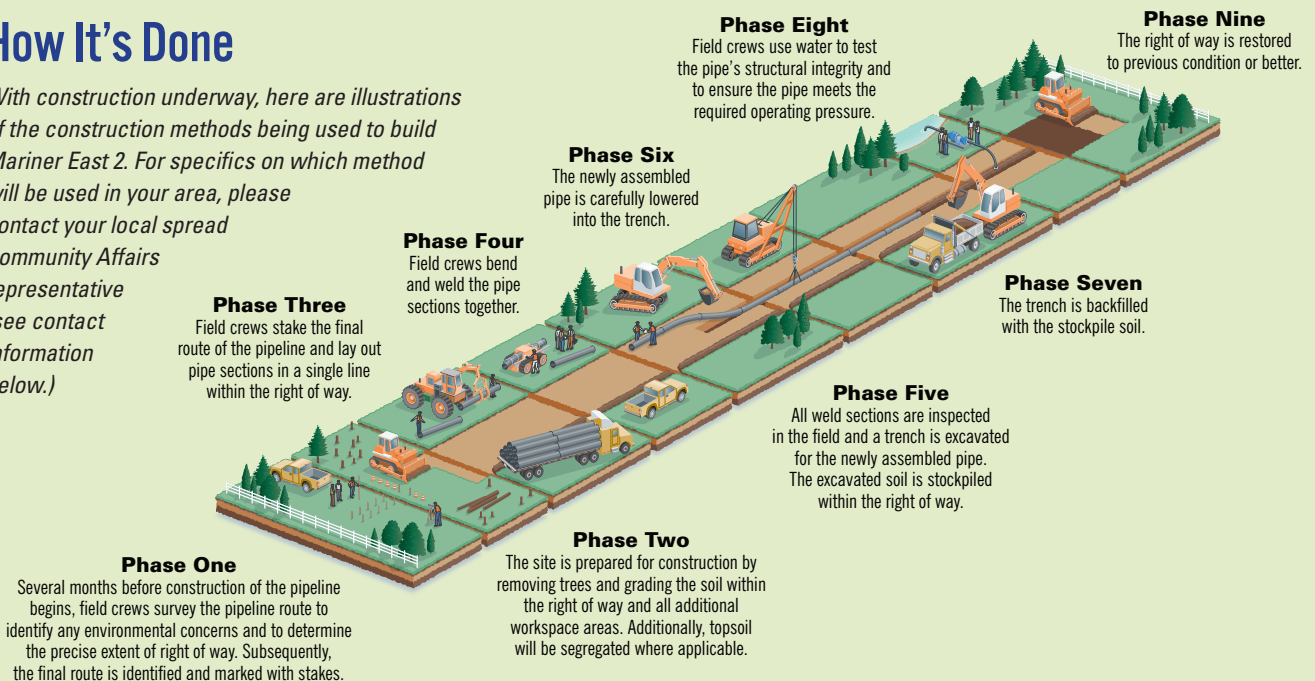
Salem Township and heading east all the way across Pennsylvania.

- The graphics included with this communication detail how these two construction methods are completed.
- Current construction activities include clearing and grading the pipeline right-of-way, road boring, horizontal directional drilling, and pipeline welding and coating, commonly referred to as stringing. These activities will continue into the summer. In areas where this work has been completed, construction crews will begin digging, lowering and covering the 20” pipeline. Crews will return at a later date to repeat this process for the installation of the 16” pipeline east of Delmont in Westmoreland County.
- The 20” line is targeted for completion by the end of September and the 16” line is expected to be finished in 2018.

- In some areas we have identified areas of need for 24-hour directional drilling, and our right-of-way team has made all landowners within close proximity to the drilling aware of these activities.
- We appreciate the patience of landowners and municipal leaders as we continue to move through construction in a safe and timely manner.
- We are deeply committed to our core values of safety, security and environmental stewardship, and these values will guide everything we do during construction of Mariner East 2.
- Our team will continue to provide regular updates to all local stakeholders in addition to this construction newsletter. ●

How It's Done

With construction underway, here are illustrations of the construction methods being used to build Mariner East 2. For specifics on which method will be used in your area, please contact your local spread Community Affairs representative (see contact information below.)



FOR MORE INFORMATION CONTACT: MATT CROCCO • matthew.crocco@energytransfer.com
855-430-4491 • www.marinerpipelinefacts.com • @SunocoPipeline



SUNOCO PIPELINE
An ENERGY TRANSFER Company



Mariner East 2 – Indiana and Cambria Counties

Sunoco Pipeline has segmented the construction of the 350-mile pipeline into seven sections from Ohio to southeast Pennsylvania. In keeping with our commitment to strong communication with local leaders and the community, each construction “spread” has an individual point of contact for community affairs.

Segment 2 includes communities located in Indiana and Cambria counties. Sunoco Pipeline will continue to provide regular project updates including important news, mapping, community partnership announcements and other pertinent information.

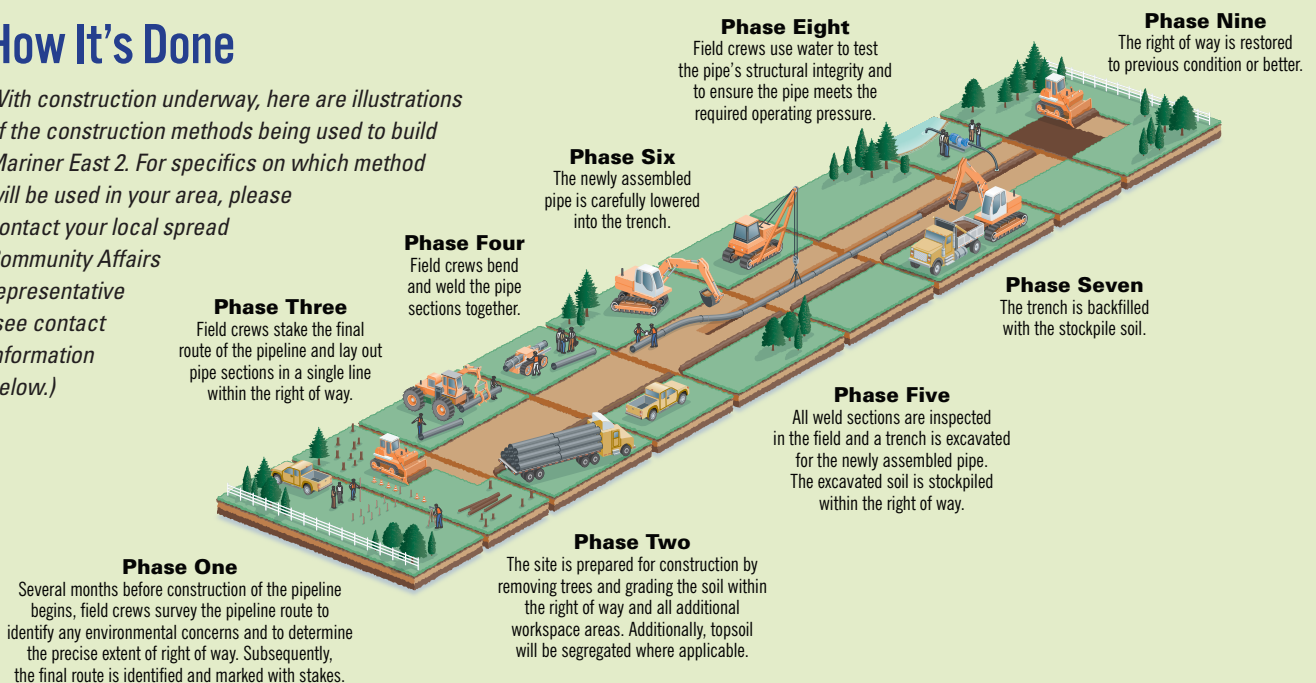
Activities of note

- Over the last several months, contractors have concluded such pre-construction activity as surveying and staking the right-of-way, access roads and temporary workspaces.
- Following the receipt of all necessary state and local permits, construction of both the 20” pipeline and the 16” pipeline has commenced in earnest. Construction of the pipeline will be completed using two methods – conventional construction and horizontal directional drill (HDD).

- The graphics included with this communication detail how these two construction methods are completed.
- Current construction activities include clearing and grading the pipeline right-of-way, road boring, horizontal directional drilling, and pipeline welding and coating, commonly referred to as stringing. These activities will continue into the summer. In areas where this work has been completed, construction crews will begin digging, lowering and covering the 20” pipeline. Crews will return at a later date to repeat this process for the installation of the 16” pipeline.
- The 20” line is targeted for completion by the end of September and the 16” line is expected to be finished in 2018.
- As of June 1st, 38 crews representing approximately 600 people are working on the line between Westmoreland and Cambria counties.
- In some areas we have identified areas of need for 24-hour directional drilling, and our right-of-way team has made all landowners within close proximity to the drilling aware of these activities.
- On a related note, we will also be using the method of approved debris control burning on the project right-of-way. This will include such materials as scrap lumber, brush and slash.
- We appreciate the patience of landowners and municipal leaders as we continue to move through construction in a safe and timely manner.
- We are deeply committed to our core values of safety, security and environmental stewardship, and these values will guide everything we do during construction of Mariner East 2.
- Our team will continue to provide regular updates to all municipalities in addition to this construction newsletter. ●

How It's Done

With construction underway, here are illustrations of the construction methods being used to build Mariner East 2. For specifics on which method will be used in your area, please contact your local spread Community Affairs representative (see contact information below.)





Mariner East 2 – Blair, Huntingdon, Juniata and Perry Counties

Sunoco Pipeline has segmented the construction of the 350-mile pipeline into seven sections from Ohio to southeast Pennsylvania. In keeping with our commitment to strong communication with local leaders and the community, each construction “spread” has an individual point of contact for community affairs.

Segment 3 includes communities located in Blair, Huntingdon, Juniata and Perry counties. Sunoco Pipeline will continue to provide regular project updates including important news, mapping, community partnership announcements and other pertinent information.

Activities of note

- Following the receipt of all necessary state and local permits, construction of both the 20” pipeline and the 16” pipeline has commenced in earnest. The 20” line is targeted for completion by the end of September and the 16” line is expected to be finished in 2018.
- We’re happy to announce that a majority of the 20” horizontal directional drill underneath Raystown Lake was completed just before tourism season kicked off. With good weather beginning and school ending, we have removed heavy equipment from the

Raystown Lake area and have completed temporary right-of-way restoration. Final work at Raystown is scheduled to conclude following the summer recreational season.

- Throughout this segment, construction activities, which include right-of-way clearing, grading and trenching, are currently taking place. In other parts of the spread, pipeline welding and bending activities are ongoing.
- Construction of the pipeline will be completed using two methods – conventional construction and horizontal directional drill (HDD). The graphics included with this communication detail how these two construction methods are completed.
- The majority of roads will be completed using a horizontal road boring method, which bores a hole below the road to avoid surface impacts and disruption of traffic. There may be temporary road flagging periodically in areas where the construction

teams are moving heavy equipment. We do not expect any road closures or long-term traffic alterations in this segment.

- To date, the Sunoco Pipeline community affairs team has met with municipalities across Blair, Huntingdon, Juniata, and Perry counties to outline construction activities and provide an overview of what construction process will be. The team will continue to schedule and meet with all municipal officials in this segment to provide updates and gather feedback.
- Our team has been establishing relationships with local elected officials and local governments, as well as with business leaders. We believe that efficient and timely communication is key to success in any project and will continue to provide updates as they become available.
- We are deeply committed to our core values of safety, security and environmental stewardship, and these values will guide everything we do during construction of Mariner East 2.
- Our team will continue to provide regular updates to all municipalities located within your segment in addition to this construction newsletter. ●

How It’s Done

With construction underway, here are illustrations of the construction methods being used to build Mariner East 2. For specifics on which method will be used in your area, please contact your local spread Community Affairs representative (see contact information below.)

Phase One
Several months before construction of the pipeline begins, field crews survey the pipeline route to identify any environmental concerns and to determine the precise extent of right of way. Subsequently, the final route is identified and marked with stakes.

Phase Three
Field crews stake the final route of the pipeline and lay out pipe sections in a single line within the right of way.

Phase Four
Field crews bend and weld the pipe sections together.

Phase Six
The newly assembled pipe is carefully lowered into the trench.

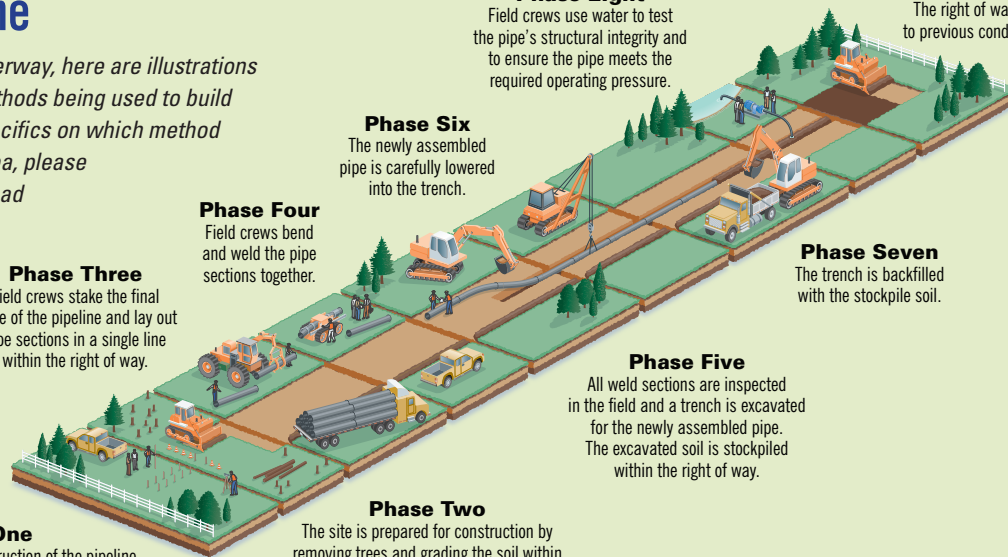
Phase Eight
Field crews use water to test the pipe’s structural integrity and to ensure the pipe meets the required operating pressure.

Phase Nine
The right of way is restored to previous condition or better.

Phase Five
All weld sections are inspected in the field and a trench is excavated for the newly assembled pipe. The excavated soil is stockpiled within the right of way.

Phase Two
The site is prepared for construction by removing trees and grading the soil within the right of way and all additional workspace areas. Additionally, topsoil will be segregated where applicable.

Phase Seven
The trench is backfilled with the stockpile soil.





Mariner East 2 – Cumberland, York and Dauphin Counties

Sunoco Pipeline has segmented the construction of the 350-mile pipeline into seven sections from Ohio to southeast Pennsylvania. In keeping with our commitment to strong communication with local leaders and the community, each construction “spread” has an individual point of contact for community affairs.

Segment 4 is approximately 52 miles and includes communities located in Cumberland, York and Dauphin counties.

Activities of note

- Over the last several months, pre-construction activities were completed including contractors surveying and staking the right-of-way as well as access roads and temporary workspaces.
- Following the receipt of all necessary state and local permits, construction of both the 20” pipeline and the 16” pipeline has commenced in earnest. The 20” line is targeted for completion by the end of September and the 16” line is expected to be finished in 2018.
- Construction of the pipeline will be completed using two methods – conventional construction and horizontal directional drill (HDD).

- The graphics included with this communication detail how these two construction methods are completed.
- Current construction activities include clearing and grading the pipeline right-of-way, road boring, horizontal directional drilling, and pipeline welding and coating, commonly referred to as stringing. These activities will continue into the summer. In areas where this work has been completed, construction crews will begin digging, lowering and covering the 20” pipeline. Crews will return at a later date to repeat this process for the installation of the 16” pipeline.
- The construction teams have divided this segment of construction into two sections -- east and west -- with the dividing line in Silver Spring Township.
- The majority of roads will be completed using a

horizontal road boring method, which bores a hole below the road to avoid surface impacts and disruption of traffic. There may be temporary road flagging periodically at areas where the construction teams are moving heavy equipment for road bores, HDD or onto the right-of-way. We do not expect any road closures or long-term traffic alterations.

- We believe that efficient and timely communication is key to success in any project and will continue to provide updates. Our team has been forging strong relationships with local elected officials and local governments, as well as with business leaders. Additionally, our team has met with a number of county officials in Dauphin, York and Cumberland counties, respectively -- including emergency response personnel.
- We are deeply committed to our core values of safety, security and environmental stewardship, and these values will guide everything we do during construction of Mariner East 2.
- We will continue to provide regular updates to local stakeholders in addition to this construction newsletter. ●

How It’s Done

With construction underway, here are illustrations of the construction methods being used to build Mariner East 2. For specifics on which method will be used in your area, please contact your local spread Community Affairs representative (see contact information below.)

Phase One
Several months before construction of the pipeline begins, field crews survey the pipeline route to identify any environmental concerns and to determine the precise extent of right of way. Subsequently, the final route is identified and marked with stakes.

Phase Three
Field crews stake the final route of the pipeline and lay out pipe sections in a single line within the right of way.

Phase Four
Field crews bend and weld the pipe sections together.

Phase Six
The newly assembled pipe is carefully lowered into the trench.

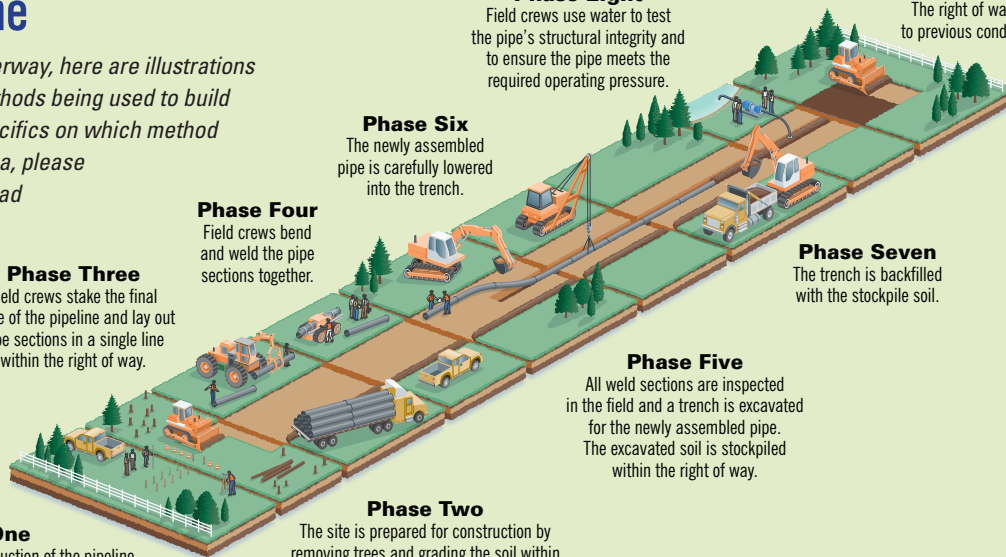
Phase Eight
Field crews use water to test the pipe’s structural integrity and to ensure the pipe meets the required operating pressure.

Phase Nine
The right of way is restored to previous condition or better.

Phase Five
All weld sections are inspected in the field and a trench is excavated for the newly assembled pipe. The excavated soil is stockpiled within the right of way.

Phase Seven
The trench is backfilled with the stockpile soil.

Phase Two
The site is prepared for construction by removing trees and grading the soil within the right of way and all additional workspace areas. Additionally, topsoil will be segregated where applicable.





Mariner East 2 – Lebanon, Lancaster and Berks Counties

Sunoco Pipeline has segmented the construction of the 350-mile pipeline into seven sections from Ohio to southeast Pennsylvania. In keeping with our commitment to strong communication with local leaders and the community, each construction “spread” has an individual point of contact for community affairs.

Segment 5 includes communities located in Lebanon, Lancaster and Berks counties. Sunoco Pipeline will continue to provide regular project updates including important news, mapping, community partnership announcements and other pertinent information.

Activities of note

- Over the last several months, pre-construction activities were completed including contractors surveying and staking the right-of-way as well as access roads and temporary workspaces.
- Following the receipt of all necessary state and local permits, construction of both the 20” pipeline and the 16” pipeline has commenced in earnest. The 20” line is targeted for completion by the end of September and the 16” line is expected to be finished in 2018.

- The construction teams have divided this segment of construction into two sections – east and west – with the dividing line in South Heidelberg Township.
- Construction of the pipeline will be completed using two methods -- conventional construction and horizontal directional drill (HDD). The graphics included with this communication detail how these two construction methods are completed.
- The majority of roads will be completed using a horizontal road boring method, which bores a hole below the road to avoid surface impacts and disruption of traffic. There may be temporary road flagging periodically at areas where the construction teams are moving heavy equipment. We do not expect any significant closures or long-term traffic alterations in this spread.

- Our community relations team has established relationships with local elected officials and local governments, as well as with business leaders. We believe that efficient and timely communication is key to success in any project and will continue to provide updates as they become available.
- Additionally, our team has met with a number of county officials in Berks, Lebanon and Lancaster counties, respectively – including emergency response personnel.
- We are deeply committed to our core values of safety, security and environmental stewardship, and these values will guide everything we do during construction of Mariner East 2.
- We will continue to provide regular updates to local stakeholders in addition to this construction newsletter. ●

How It’s Done

With construction underway, here are illustrations of the construction methods being used to build Mariner East 2. For specifics on which method will be used in your area, please contact your local spread Community Affairs representative (see contact information below.)

Phase One

Several months before construction of the pipeline begins, field crews survey the pipeline route to identify any environmental concerns and to determine the precise extent of right of way. Subsequently, the final route is identified and marked with stakes.

Phase Three

Field crews stake the final route of the pipeline and lay out pipe sections in a single line within the right of way.

Phase Four

Field crews bend and weld the pipe sections together.

Phase Six

The newly assembled pipe is carefully lowered into the trench.

Phase Two

The site is prepared for construction by removing trees and grading the soil within the right of way and all additional workspace areas. Additionally, topsoil will be segregated where applicable.

Phase Eight

Field crews use water to test the pipe’s structural integrity and to ensure the pipe meets the required operating pressure.

Phase Five

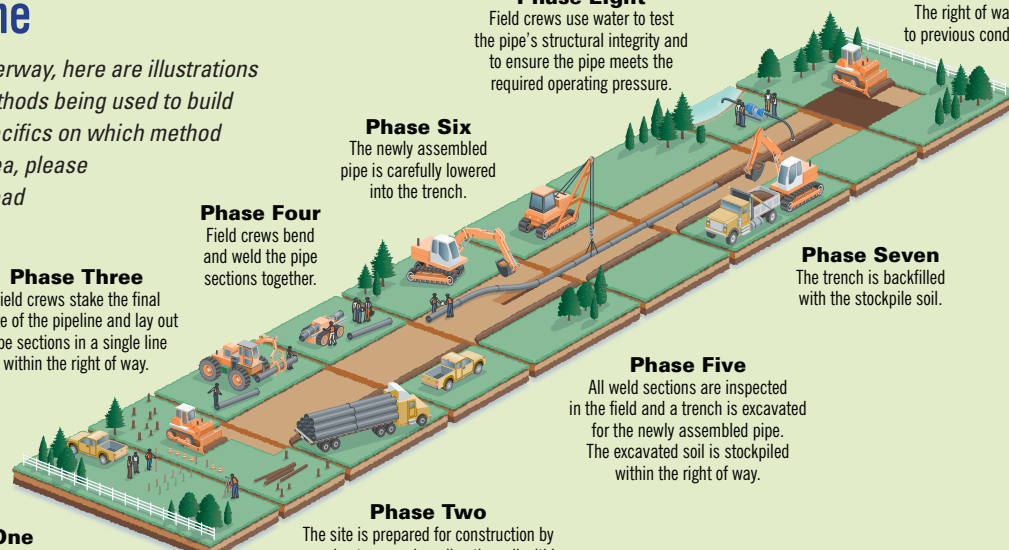
All weld sections are inspected in the field and a trench is excavated for the newly assembled pipe. The excavated soil is stockpiled within the right of way.

Phase Seven

The trench is backfilled with the stockpile soil.

Phase Nine

The right of way is restored to previous condition or better.



FOR MORE INFORMATION CONTACT: CHRIS BRENNAN • Christopher.Brennan@energytransfer.com
855-430-4491 • www.marinerpipelinefacts.com • @SunocoPipeline



SUNOCO PIPELINE
AN ENERGY TRANSFER Company



Mariner East 2 – Chester and Delaware Counties

Sunoco Pipeline has segmented the construction of the 350-mile pipeline into seven sections from Ohio to southeast Pennsylvania. In keeping with our commitment to strong communication with local leaders and the community, each construction “spread” has an individual point of contact for community affairs.

Segment 6 includes communities located in Chester and Delaware counties. During the construction, a Sunoco Pipeline public affairs representative will be providing regular updates for specific Segment 6 and general project updates.

Activities of note

- Following the receipt of all necessary state and local permits, construction of both the 20” pipeline and the 16” pipeline has commenced in earnest. The 20” line is targeted for completion by the end of September and the 16” line is expected to be finished in 2018.
- To date, site preparations for open cut installation is underway in western Chester County. Horizontal directional drills are also running in eastern Chester and Delaware counties. Preparation work

continues across the remainder of the spread. Residents in Chester and Delaware counties have begun seeing workers along busy roads such as Route 352 in Delaware County and Ship Road in the Exton area; while roads and workers will be well marked, we ask the community to keep these workers’ safety in mind when driving at dusk and dawn.

- Construction of the pipeline will be completed using two methods -- conventional construction and horizontal directional drill (HDD). In spread 6, the majority of the work will be done by horizontal directional drill. The graphics included with this communication detail how these two construction methods are completed.
- Almost all roads will be crossed using a horizontal road boring method, which bores a hole below

the road to avoid surface impacts and disruption of traffic. There may be temporary road flagging periodically at areas where the construction teams are moving heavy equipment.

- Our community relations team has established relationships with local elected officials and local governments, as well as with business leaders. We believe that efficient and timely communication is key to success in any project and will continue to provide updates as they become available. The team also has hosted numerous informational meetings to address resident questions and concerns.
- Additionally, our team has met with a number of county officials in Chester and Delaware counties, respectively – including emergency response personnel.
- We are deeply committed to our core values of safety, security and environmental stewardship, and these values will guide everything we do during construction of Mariner East 2.
- Our team will continue to provide regular updates to local stakeholders in addition to this construction newsletter. ●

How It’s Done

With construction underway, here are illustrations of the construction methods being used to build Mariner East 2. For specifics on which method will be used in your area, please contact your local spread Community Affairs representative (see contact information below.)

Phase One
Several months before construction of the pipeline begins, field crews survey the pipeline route to identify any environmental concerns and to determine the precise extent of right of way. Subsequently, the final route is identified and marked with stakes.

Phase Three
Field crews stake the final route of the pipeline and lay out pipe sections in a single line within the right of way.

Phase Four
Field crews bend and weld the pipe sections together.

Phase Six
The newly assembled pipe is carefully lowered into the trench.

Phase Two
The site is prepared for construction by removing trees and grading the soil within the right of way and all additional workspace areas. Additionally, topsoil will be segregated where applicable.

Phase Eight
Field crews use water to test the pipe’s structural integrity and to ensure the pipe meets the required operating pressure.

Phase Five
All weld sections are inspected in the field and a trench is excavated for the newly assembled pipe. The excavated soil is stockpiled within the right of way.

Phase Seven
The trench is backfilled with the stockpile soil.

Phase Nine
The right of way is restored to previous condition or better.

